

Idle Control System

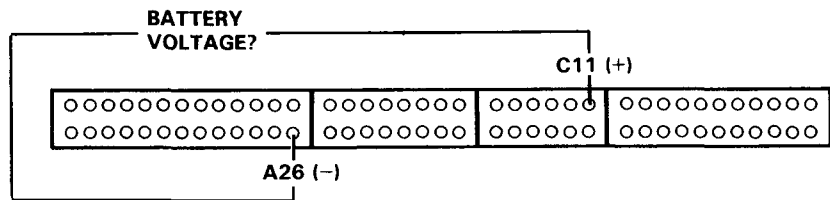
Troubleshooting Flowchart — Starter Switch Signal

This signals the ECM or PCM when the engine is cranking.

Inspection of Starter Switch Signal.

Connect the test harness between the ECM or PCM and connector (page 11-37).

Measure voltage between C11 (+) terminal and A26 (-) terminal when the ignition switch in the start position.



NOTE:

- M/T: Clutch pedal must be depressed.
- A/T: Transmission in **N** or **P** position.

Is there battery voltage ?

NO

YES

Inspect No. 14 STARTER SIGNAL (7.5 A) fuse in the under-dash fuse/relay box.

Is the fuse OK?

NO

Replace the fuse.

YES

Repair open in BLK/WHT wire between ECM or PCM (C11) and No. 14 STARTER SIGNAL (7.5 A) fuse.

Starter switch signal is OK.